

# The Zero Repetition Bank Series

The Emerging Era of Policy Hubs:  
A Vision for Dynamic Compliance  
Management in IT Operations  
February 2024



The better the question. The better the answer.  
The better the world works.



Shape the future  
with confidence

# Contents

## 01 Current Compliance Challenges

---

## 02 What is the Policy Hub?

---

## 03 Strategic Advantages for CROs

---

## 04 Solid CRO / CIO alignment is crucial

---

## 05 Conclusion

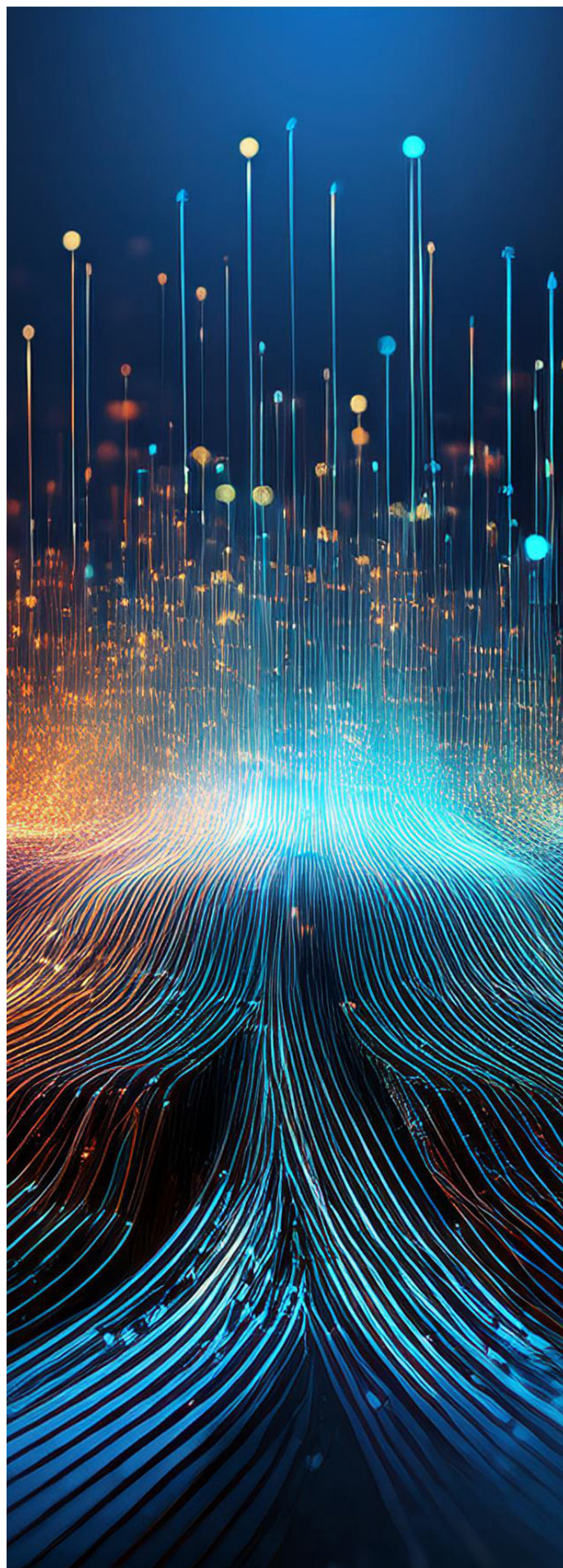
# The Zero Repetition Bank

## The Emerging Era of Policy Hubs: A Vision for Dynamic Compliance Management in IT Operations

Organizations need a proactive, scalable approach to compliance that empowers leaders, especially those like Chief Risk Officers (CROs), to manage policies effectively and ensure operational resilience.

Enter the Policy Hub: an emerging concept in the IT governance landscape, transforming how policies are managed, enforced, and aligned across diverse, cloud based infrastructure.

The Policy Hub is not a tool, it's a strategic concept which changes the way we think about compliance. It enables policy makers to directly manage and enforce governance rules, leveraging automation, AI, and real-time feedback to dynamically align business objectives with the underlying infrastructure.







# 1

## Current Compliance Challenges

# 1. Current Compliance Challenges

Today, compliance management in IT operations is a tedious, reactive process. Many organizations still rely on manual workflows and paper-based policies that require significant human intervention. Some organizations have digitized these processes. In essence, it remains a manual process. These manual processes lead to:

- **High operational costs**  
Extensive manual effort is needed to align compliance policies with operational practices, increasing workload and operational expense.
- **Compliance gaps**  
Manual handling introduces a high likelihood of misalignment between documented policies and their enforcement, creating potential compliance risks.
- **Lag in responsiveness**  
Paper-driven processes make it difficult to respond promptly to changing regulations, resulting in slow adaptation and increased risk.
- **Limited visibility**  
Traditional compliance processes often do not provide a real-time view into the current compliance posture, forcing organizations into a reactive stance during audits.

In this context, organizations need a new approach—a concept that empowers CROs and policy makers to dynamically manage compliance without extensive reliance on operational teams which manage or audit the IT landscape.







# 2

## What is the Policy Hub?

## 2. What is the Policy Hub?

The Policy Hub is a concept built around three fundamental ideas: automation, alignment, and adaptability. It brings together the principles of Everything-as-Code, particularly Policy-as-Code (PaC), with the power of AI-driven automation. This allows organizations to bridge the gap between governance policy-making and practical, real-time enforcement.

The Policy Hub enables policy makers, such as CROs, to:

### 1. Translate business objectives into enforceable policies:

Through the Policy Hub, business policies are transformed into structured, actionable policies that are enforceable as Policy-as-Code. This means that compliance rules, such as data residency or security standards, can be encoded in a form that IT systems understand and enforce without manual oversight.

### 2. Dynamic alignment with IT infrastructure:

Compliance is not static. The Policy Hub adapts in real time, continuously monitoring IT infrastructure through Policy-as-Code to ensure that every aspect aligns with the latest governance standards. This approach prevents compliance drift, where configurations diverge over time, and keeps all resources within policy bounds automatically.

### 3. Empowerment of non-technical stakeholders:

Unlike current compliance processes for Policy-as-Code that require engineers to manually codify business policies into Policy-as-Code, the Policy Hub provides policy makers with a business-language interface. This allows CROs to read, adjust, and validate PaC directly, in their own terms, without relying on PaC-engineers to interpret technical details.

## Key Features of a Policy Hub

### AI-driven policy alignment:

The Policy Hub continuously aligns the written policies with the live PaC environment. AI agents track discrepancies between the intended policy and its application, providing policy makers with insights and opportunities for adjustment before non-compliance becomes a reality.

### Real-time compliance monitoring:

The Policy Hub concept provides ongoing monitoring capabilities, enabling proactive rather than reactive governance. Real-time adjustments ensure that infrastructure remains compliant as both regulations and the infrastructure itself evolve.

### Self-service for policy makers:

The Policy Hub makes policy setting and enforcement accessible for non-technical leaders. Policy makers can create, adjust, and enforce compliance standards without needing to involve technical teams for every change to PaC, thus putting the CRO in the driver's seat.

# 3

## Strategic Advantages for CROs



### 3. Strategic Advantages for CROs

The Policy Hub concept offers several strategic benefits to CROs looking to ensure compliance across increasingly complex IT environments:

- **Reduced risk through proactive compliance:**  
By continuously monitoring and adjusting for compliance, the Policy Hub concept ensures a proactive approach to risk management. Compliance gaps are detected and resolved before they become operational or reputational issues.
- **Scalable compliance management:**  
As organizations grow and move toward multi-cloud and hybrid environments, scaling manual compliance processes becomes impossible. The Policy Hub uses AI to automate compliance checks, making scaling seamless without a proportional increase in compliance-related workload.
- **Lower operational costs:**  
Automation reduces the need for manual compliance checks, enabling organizations to reduce operational costs and reallocate resources to strategic initiatives. This is critical in regulated industries where compliance-related overheads are substantial.
- **Enhanced visibility and control:**  
With continuous monitoring and business-friendly insights, the Policy Hub provides the CRO with greater visibility into the organization's compliance posture. This visibility makes audits less disruptive and more of a verification exercise rather than a discovery process.

### The Road Ahead: Technology and Market Proofpoints for CROs

To evaluate the maturity and potential impact of the Policy Hub concept, CROs should look for the following key proof points:

#### **Expansion of Policy-as-Code practices:**

Look for increasing adoption of Policy-as-Code frameworks by vendors who demonstrate successful case studies or collaborations with leading organizations. Also, assess the availability of tools that allow automatic policy adjustment in response to regulatory changes, focusing on vendor demonstrations of practical, real-world use.

#### **Emergence of Policy-as-Code tools:**

Watch for the rise of PaC solutions that enable seamless translation of governance rules into enforceable policies. This includes tracking vendors introducing AI-driven PaC automation capabilities.

#### **Integration of AI in compliance monitoring:**

Proof of usage of AI technology for real-time compliance tracking is a critical indicator. Look for tools that demonstrate automated alignment between regulatory changes and infrastructure.

#### **AI use in broader compliance fields:**

Beyond vendors, look for examples of AI being applied effectively in compliance processes across other industries. Key indicators include the use of AI for automating regulatory reporting, detecting compliance anomalies in financial transactions, or predicting compliance risks based on historical data patterns. These advancements can provide valuable proof points for how AI could enhance the efficiency of IT operations compliance within the Policy Hub framework.



# 4 Solid CRO / CIO alignment is crucial



## 4. Solid CRO / CIO alignment is crucial

To successfully implement a Policy Hub approach, it is crucial for CROs to engage in strategic discussions with their CIO counterparts. Key topics include:

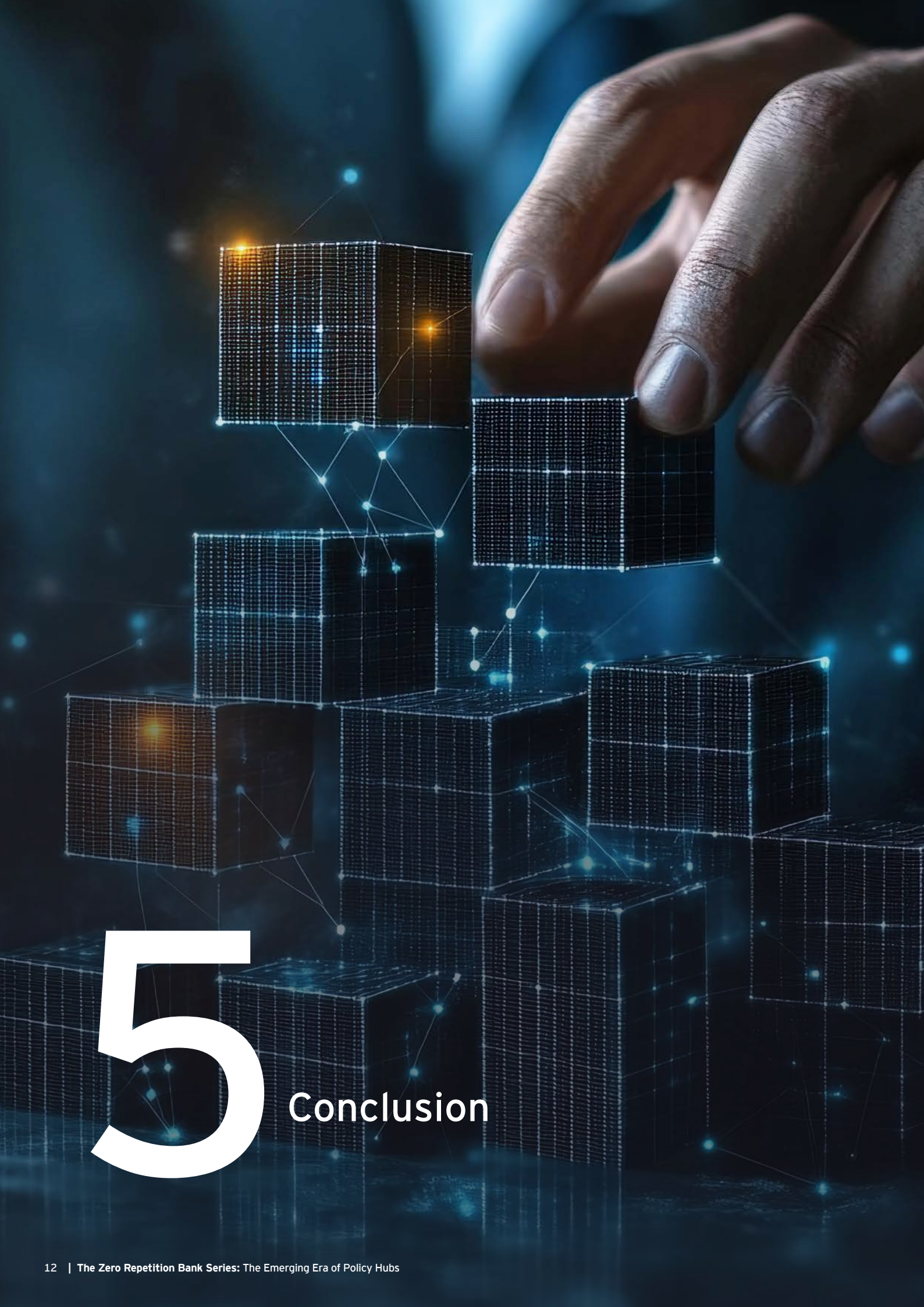
- **Aligning on compliance and automation objectives:**  
Discuss the organization's current compliance pain points and explore how an automated, Policy-as-Code approach could alleviate these issues. Highlight how the Policy Hub concept supports both compliance and broader IT automation goals.
- **Leveraging existing infrastructure investments:**  
Identify existing Infrastructure-as-Code (IaC) practices and assess how they can integrate with a Policy Hub. This conversation should focus on leveraging current investments to build a scalable, compliant infrastructure.
- **Joint investment in AI capabilities:**  
Emphasize the need for shared investments in AI tools that can drive continuous compliance monitoring and enforcement. Position this as a strategic initiative that aligns with digital transformation goals.
- **Building a roadmap for Policy-as-Code implementation:**  
Work together to create a phased roadmap that starts with defining key policies that can be translated into code. Collaboratively outline milestones, such as proof-of-concept projects or pilot programs, to ensure both compliance and IT goals are met.

The Policy Hub is an emerging concept, with tooling on the horizon, but the core capabilities required to bring it to life are already within reach. The convergence of automation, AI-driven compliance monitoring, and integration across cloud environments paves the way for this concept to evolve swiftly from theoretical to practical.

For organizations aiming to future-proof their compliance management, developing a Policy Hub approach can offer significant advantages. By positioning themselves as first-movers in embracing AI-driven policy automation, they can achieve operational resilience, reduce regulatory risk, and ensure ongoing alignment between their business objectives and IT realities.







# 5 Conclusion



## 5. Conclusion

The Policy Hub represents an exciting new approach to compliance management that directly addresses the pain points experienced by CROs today. It transforms compliance from a reactive, inefficient, cumbersome process to an integrated, proactive function that operates dynamically, reduces manual intervention, and directly aligns with business goals.

As organizations embrace digital transformation, the Policy Hub provides an opportunity to bring the often siloed realms of business policy-making and IT operations into alignment. By adopting this approach, CROs will ensure compliance and drive strategic agility, making compliance a competitive advantage rather than a regulatory burden.



# Meet our Technology Strategy & Transformation team

---



**Remi Hesterman**  
Partner  
EY Netherlands  
E: remi.hesterman@nl.ey.com



**Martin Borman**  
Strategic Solutions Architect  
External advisor to EY  
E: martin.borman@nl.ey.com



**Matthieu Griffioen**  
Director  
EY Netherlands  
E: matthieu.griffioen@nl.ey.com



**Sven Schenkel**  
Director  
EY Netherlands  
E: sven.schenkel@nl.ey.com



## EY | Building a better working world

EY is building a better working world by creating new value for clients, people, society and the planet, while building trust in capital markets.

Enabled by data, AI and advanced technology, EY teams help clients shape the future with confidence and develop answers for the most pressing issues of today and tomorrow.

EY teams work across a full spectrum of services in assurance, consulting, tax, strategy and transactions. Fueled by sector insights, a globally connected, multidisciplinary network and diverse ecosystem partners, EY teams can provide services in more than 150 countries and territories.

### All in to shape the future with confidence.

EY refers to the global organization, and may refer to one or more, of the member firms of Ernst & Young Global Limited, each of which is a separate legal entity. Ernst & Young Global Limited, a UK company limited by guarantee, does not provide services to clients. Information about how EY collects and uses personal data and a description of the rights individuals have under data protection legislation are available via [ey.com/privacy](https://ey.com/privacy). EY member firms do not practice law where prohibited by local laws. For more information about our organization, please visit [ey.com](https://ey.com).

© 2025 EY Nederland B.V.  
All Rights Reserved.

ED NONE

[ey.com](https://ey.com)