



Shape the future
with confidence

Rapid Reclaim Analyzer

Discover options to reclaim
withholding tax

How could a better understanding of withholding tax reclaims benefit your organization? Depending on the jurisdiction of investment and other conditions, you may be able to reclaim all, or part of, the taxes withheld abroad.

We developed the Rapid Reclaim Analyzer (RRA) to assist in potentially identifying over- and underwithheld taxes in more than 100 jurisdictions. The RRA reviews tax withheld on securities and identifies variances between the actual withholding tax rate applied and the expected rate based on investor domicile and entity type.

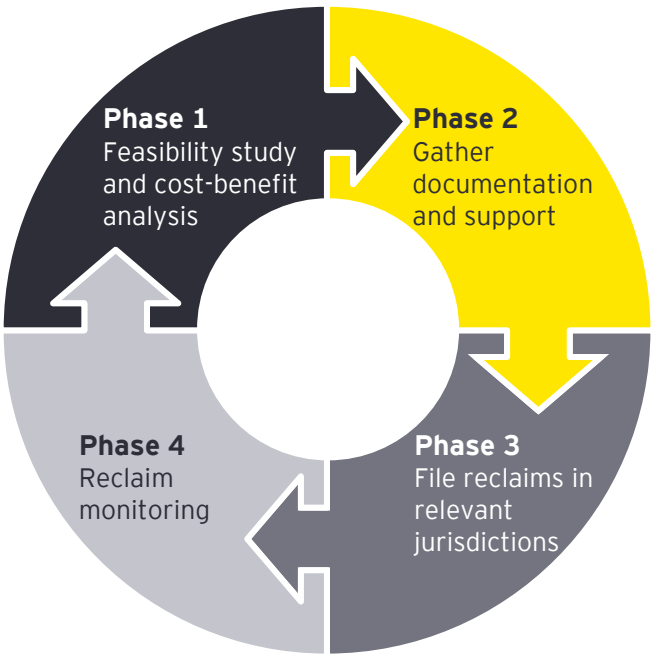
In addition, the RRA helps you assess the feasibility of obtaining the entitled excess withholding tax paid or time left to file treaty, domestic or European Court of Justice reclaims (i.e., statute of limitations) and amount at stake by jurisdiction.

Our dedicated team will also advise how to achieve relief at source where applicable and can assist with filing reclaims where viable.

RRA features

- User-friendly dashboard
- Real-time updates
- Statute of limitations tracking
- Responsive team available for questions and guidance

RRA: A comprehensive, results-driven approach to identify, analyze and track reclaims

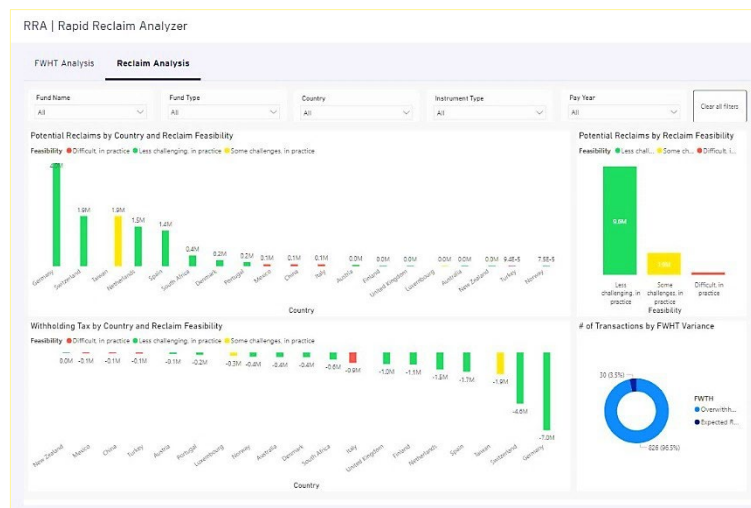
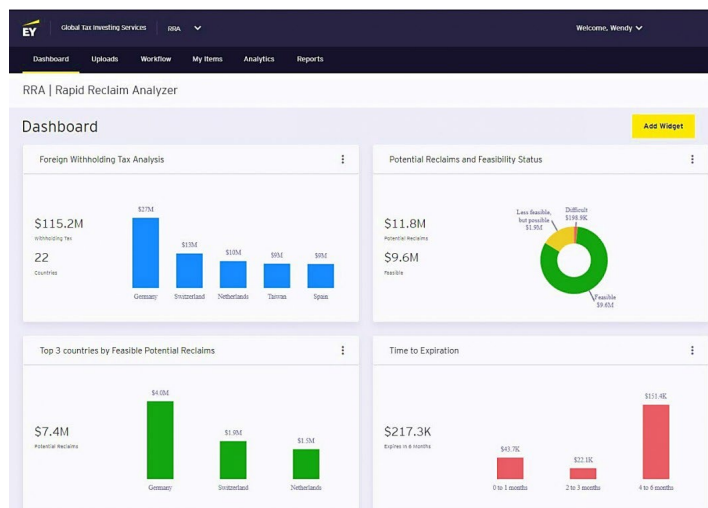


The variance identifier includes a reclaim feasibility ranking and statute of limitations tracking

Pay dates: 2020-2022 Fund type: US pension Thresholds: Yes Treaty (LOB): Yes										
Withholding tax rate	Country of investment	Instrument category	Treaty	Expected withholding tax rate	Is there a reclaim opportunity ?	Reclaim rate %	Reclaim amount (USD)	Feasibility	Time left to file	Statute of limitations
15.315%	Japan	Publicly traded equity	Yes	0.0%	Yes	15.315%	10,000	Some challenges, in practice	01 year 03 months 18 days	03/26/2025
15.315%	Japan	Publicly traded equity	Yes	0.0%	Yes	15.315%	1,000	Some challenges, in practice	01 year 09 months 20 days	09/28/2025
15.000%	Netherlands	Publicly traded equity	Yes	0.0%	Yes	15.000%	7,500	Less challenging, in practice	02 years 00 months 23 days	12/31/2025
15.000%	Netherlands	Publicly traded equity	Yes	0.0%	Yes	15.000%	7,500	Less challenging, in practice	02 years 00 months 23 days	12/31/2025
15.000%	Netherlands	Publicly traded equity	Yes	0.0%	Yes	15.000%	7,500	Less challenging, in practice	03 years 00 months 23 days	12/31/2026

This table is for illustration purposes only and is not intended to be relied upon as accounting, tax or other professional advice.

RRA's dashboard provides data transparency to support your decision-making



Source: Rapid Reclaim Analyzer as of January 2024

Danielle Clark
danielle.clark@ey.com
+1 203 674 3693

Kelly Sullivan
kelly.sullivan@ey.com
+1 201 551 5233

Sarah Belin
sarah.belinzerbib@ey.com
+1 212 773 9835

Stephanie Tanguay
stephanie.tanguay@ey.com
+1 617 585 0410

Wendy Smith
wendy.smith@ey.com
+1 616 336 8254

Aine O'Connor
aine.oconnor1@ey.com
+1 917 436 0161

Diana Camejo
diana.camejo@ey.com
+1 212 773 1146

Austin Donze
austin.donze1@ey.com
+1 704 335 4258

EY | Building a better working world

EY is building a better working world by creating new value for clients, people, society and the planet, while building trust in capital markets.

Enabled by data, AI and advanced technology, EY teams help clients shape the future with confidence and develop answers for the most pressing issues of today and tomorrow.

EY teams work across a full spectrum of services in assurance, consulting, tax, strategy and transactions. Fueled by sector insights, a globally connected, multidisciplinary network and diverse ecosystem partners, EY teams can provide services in more than 150 countries and territories.

All in to shape the future with confidence.

EY refers to the global organization, and may refer to one or more, of the member firms of Ernst & Young Global Limited, each of which is a separate legal entity. Ernst & Young Global Limited, a UK company limited by guarantee, does not provide services to clients. Information about how EY collects and uses personal data and a description of the rights individuals have under data protection legislation are available via ey.com/privacy. EY member firms do not practice law where prohibited by local laws. For more information about our organization, please visit ey.com.

What makes EY distinctive in financial services

Over 84,000 EY professionals are dedicated to financial services, serving the banking and capital markets, insurance, and wealth and asset management sectors. We share a single focus – to build a better financial services industry, one that is stronger, fairer and more sustainable.

© 2025 EYGM Limited.
All Rights Reserved.

EYG no. 000984-24GbI
2507-10816-CS (FSO)
ED None

This material has been prepared for general informational purposes only and is not intended to be relied upon as accounting, tax, legal or other professional advice. Please refer to your advisors for specific advice.

ey.com